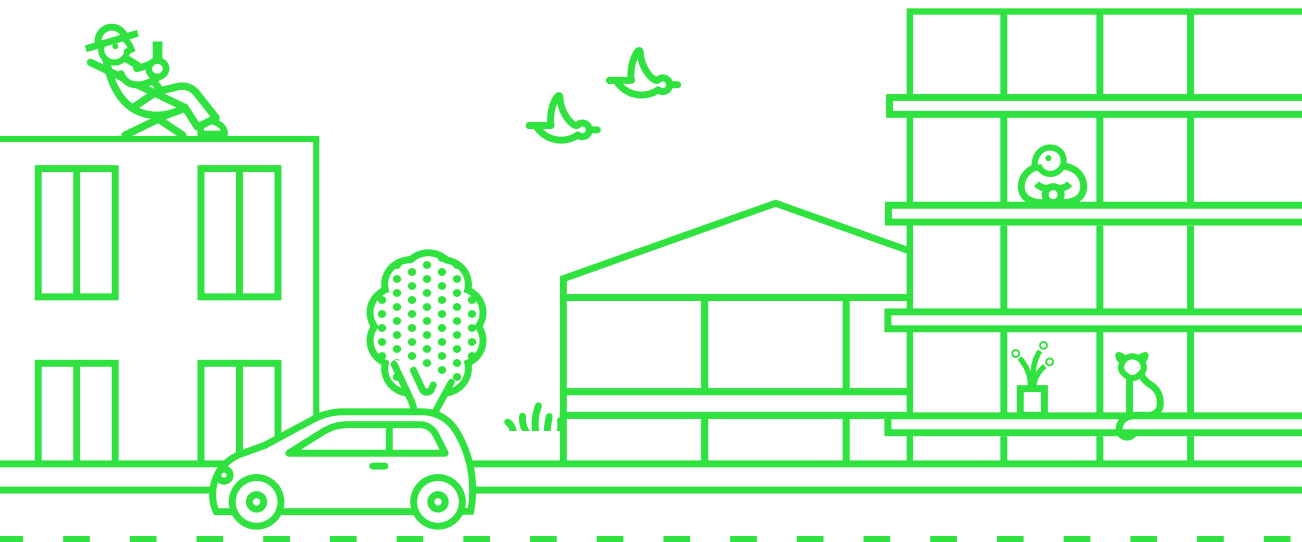


# Porte Pouchet



# A renewed and diversified neighbourhood

The Porte Pouchet project covers 15 hectares alongside Boulevard Périphérique, north of the 17<sup>th</sup> arrondissement, adjacent to the cities of Saint-Ouen and Clichy-la-Garenne. It is part of the Great Urban Renewal Project (GPRU) that the City of Paris launched in 2003 to redefine the city's gateways (portes de Paris), which serve as interchanges with the ring road. The project focuses on reorganising city services to make way for a broader range of uses, redeveloping public spaces and buildings, relinking the neighbourhood's areas and establishing new urban continuity between Paris and towns along the Seine by creating a wide-open landscaped area that blends with the ring road. Porte Pouchet also benefits from enhanced transport services with the arrival of Tramway T3b in 2018 and Metro line 14 in 2020. Awarded to Semavip in 2005 and taken over by Paris & Métropole Aménagement, the project will be completed in late 2020.

# Place Pouchet: a new urban continuity

Covering an area of 15,000 sqm, Place Pouchet is creating new continuities between neighbourhoods by connecting Paris to Clichy and Saint-Ouen, two municipalities bordering Paris. The project, designed by the landscape architecture firm Agence TER, merges with the imposing viaduct, which it draws on to design three spaces, each for different uses and with varied landscapes:

- A spacious recreational grassed area and specially designed playgrounds for children and a community centre lies along Boulevard du Bois-le-Prêtre and Rue Hélène et François Missoffe.
- To the north, along Rue Floréal, a garden extending from the tree-lined promenade of François Mitterrand Park in Saint-Ouen offers a pleasant path connecting Metro line 14 and RER suburban train line C.
- A sport complex with with four 5-a-side football pitches, operated by LE FIVE will be housed under the viaduct of the ring road. This destination facility, with activities also intended for the neighbourhood, will be open to the public from 9 am to midnight.

**Delivery of Place Pouchet and the LE FIVE facility is expected in early April 2020 and the community centre in summer 2020..**

Playgrounds and the monumental tower at the centre of the view were redesigned through a competitive selection process in which residents, city departments and elected officials participated.

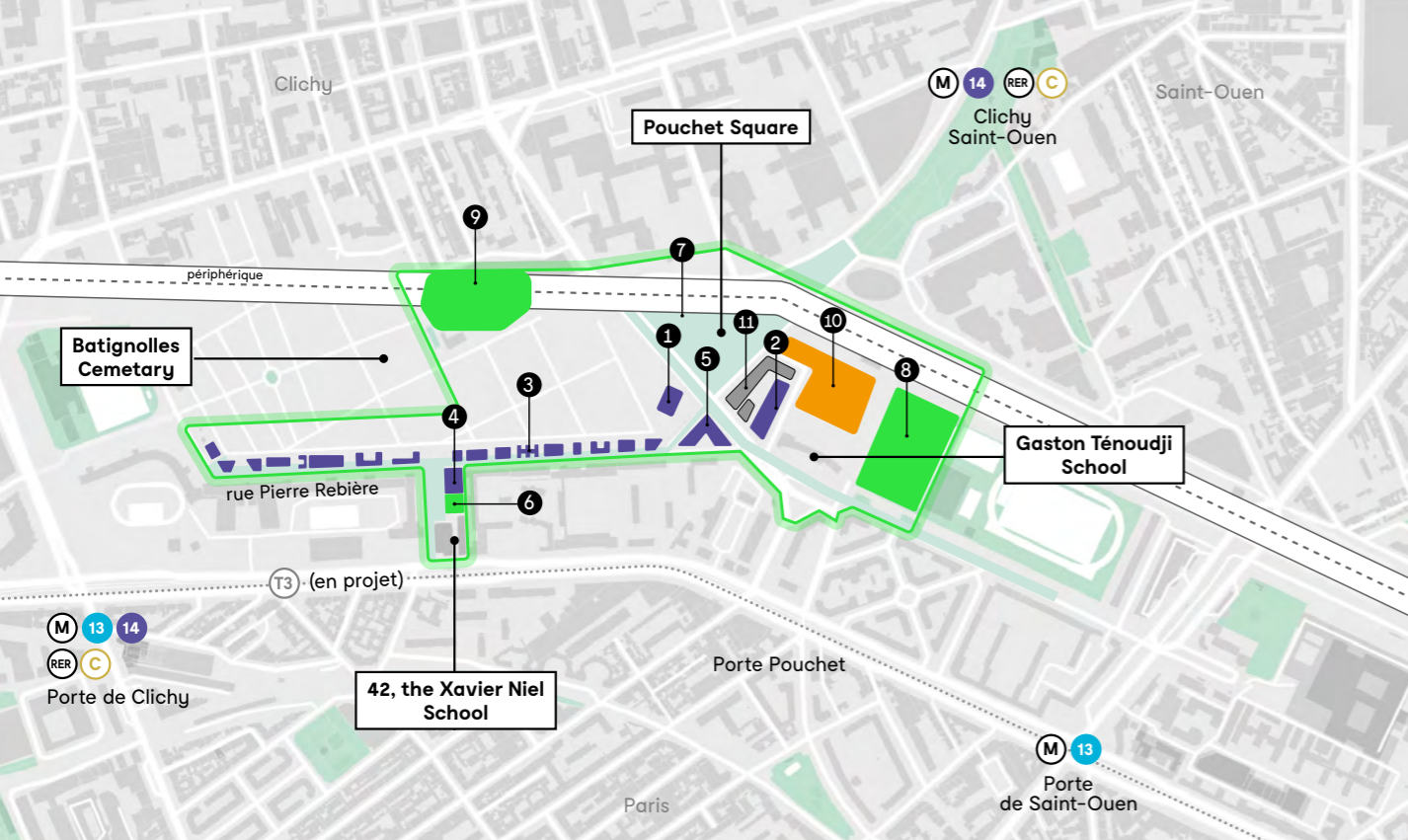


© Sergio Gracia



© Infinite Architecture

# Project overview



- Where we operate
- Offices
- Apartment hotel
- Road improvement
- Housing
- Municipal facilities and public services



**9 Car holding pond**  
Project management: Gaia



**3 Rue Rebière**



**4 Rebière housing block**  
Contracting authority: Paris Habitat – Project management: Belus



**5 Social housing**  
Project management: Lambert Lenack

## Transport

- RER C.
- Metro line 13.
- Extension of Tramway T3b to Porte d'Asnières in late 2018.
- Extension of Metro line 14 from Gare Saint-Lazare to Mairie de Saint-Ouen by late 2020.

## Housing

- Rehabilitation of Bois-le-Prêtre Tower **1** (Project management: Lacaton & Vassal) and Barre Borel **2**.
- Demolition of the third staircase of Barre Borel and Borel Tower near the ring road (Contracting authority: Paris Habitat).
- Construction of 190 housing units, including 40 for purchase, along Batignolles Cemetery and the reclassified Rue Rebière **3** (Contracting authorities: Paris Habitat and Nexity), as well as 20 social housing units and a crèche on the Rebière housing block **4** (Contracting authority: Paris Habitat – Project management: Belus) and 60 on Boulevard du Bois-le-Prêtre **5** (Contracting authority: AFL – Project management: Lambert Lenack).

## Jobs

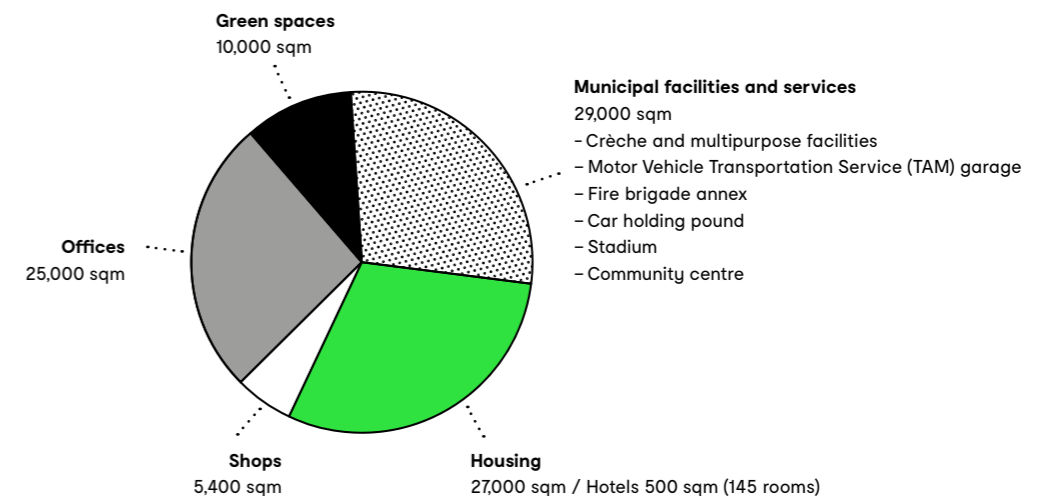
- Construction of an office building with 800 Canon France employees **10** (Developer: Kaufman & Broad – Project management: Agence Leclercq) and a 145-room apartment hotel **11** (Developer: CFA – Project management: Hardel Le Bihan).

## Facilities and services

- Relocation of a crèche at the foot of the Rebière housing block **6**.
- Creation of a community centre at Place Pouchet **7** (Contracting authority: P&Ma – Project management: MCBAD).
- Relocation of the Motor Vehicle Transportation Service (TAM) and Paris Fire Brigade to the area under the elevated Max Rousié Stadium **8** (Contracting authority: Semavip – Project management: Bruno Mader).
- Move of the car holding pond to the area under the ring road **9** (Contracting authority: Semavip and P&Ma – Project management: Gaia).

## Public space: Semavip then P&Ma as urban developers

- Development of Place Pouchet (Developer: P&Ma – Project management: Agence TER) to create 10,000 sqm of green spaces and 5,000 sqm under the ring road, partly for the LE FIVE sports complex with four 5-a-side football pitches (Client: FIVE – Project management: Dream).
- Creation of a north-south road along Place Pouchet (Project management: BATT and Urbicus).
- Redevelopment of the tree-lined promenade of Rue André Bréchet into a one-way street.
- Creation of a square on the Rebière housing block and a pedestrian link connecting Bd Bessières.
- Redevelopment of Boulevard du Bois-le-Prêtre, Rue Borel and Rue Floréal (Project management: BATT and Urbicus).



# Project stakeholders

---

## City of Paris

### Paris & Métropole Aménagement

The local public company Paris & Métropole Aménagement, whose capital is held by the City of Paris and Métropole du Grand Paris, is the developer of the urban development zones (ZAC) Cardinet-Chalabre and Clichy-Batignolles on behalf of the City of Paris.

P&Ma is currently conducting six projects in the Paris area: Clichy-Batignolles, Saint-Vincent-de-Paul, Paul Meurice, Porte Pouchet, Chapelle Charbon and Gare des Mines-Fillettes. It is contributing to the renewal of development models and practices with the goal of reducing the city's carbon footprint and keeping pace with changing lifestyles.

### Supervising architects

MGAU/TVK.

### Project management for Place Pouchet and the community centre

Agence TER / MCBAD / Ingetec / PRISME  
Ingénierie / Les éclaireurs / ABC Décibel.

---

## Contact

**Paris & Métropole Aménagement**  
12 passage Susan Sontag  
CS 30054 — 75 927 Paris cedex 19  
[www.parisetmetropole-amenagement.fr](http://www.parisetmetropole-amenagement.fr)  
[contact@parisetmetropole.fr](mailto:contact@parisetmetropole.fr)  
+33 (0)1 75 77 35 00

Editorial design: P&Ma, communications department  
Graphic design: Designers Unit